

# Help More Students Say "Here"



## Chronic absenteeism

1

Lowers achievement

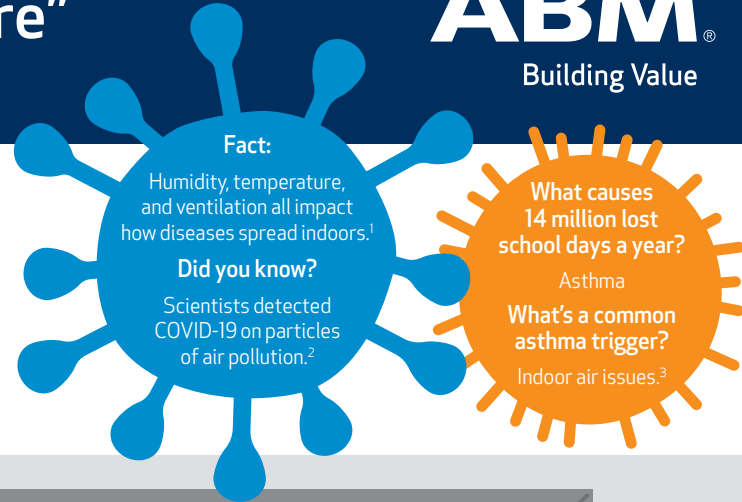
2

Increases costs

3

Upsets funding formulas

...and disproportionately affects disadvantaged students.



## Have you calculated the cost of learning days lost to facility issues?



Unsatisfactory facility conditions pushed attendance down 2-3%.<sup>4</sup>



For every 1,000 students, infrastructure issues add 4-5 absences a day – and 10-13 more dropouts.<sup>5</sup>



Average per-pupil spending per day: \$70<sup>6</sup>



Average cost of a substitute per day: \$105<sup>7</sup>

For 1 school of 500 students and 30 teachers: Earning back 1 day for everyone = **\$38,150**

ABM projects generate an average of **\$1,100** in per student funding.

## Healthier Budgets = Healthier Classrooms = Higher Achievement



ABM energy solutions save the education client on average 27%



A study found improved ventilation (and fewer volatile organic compounds) led to 61% higher cognitive test scores in adults.<sup>8</sup>



Another study found students attended 4 more days when moved to new schools.<sup>9</sup>

## Questions about Facility Innovations?

These technologies could improve air quality and energy savings for your schools.

### Cold Plasma Air Cleaning

CDC Affiliate Labs confirm up to 99.9% kill rates for pathogens and mold spores<sup>10</sup>

Cleaning indoor air requires less outdoor air, saving energy

### Ultraviolet Germicidal Lights

99% reduction of bacteria and mold on surfaces, less in flowing air<sup>11</sup>

Preventing growth of mold and bacteria on coils and drain pans may improve HVAC energy performance

### MERV Filter Rating

EPA recommends 8-13 Minimum Efficiency Rating Value (MERV) for schools<sup>12</sup>

Pressure gauges can tell you when filters start to over-impact energy cost

Ask ABM how energy projects can help you safeguard attendance and achievement.

866.624.1520 | [ABM.com/Education](http://ABM.com/Education)

©2020 ABM Industries Inc. | All rights reserved. | ABM-08317-0520

#### Sources:

- <https://www.lung.org/clean-air/at-home/indoor-air-pollutants/bacteria-and-viruses>
- <https://www.theguardian.com/environment/2020/apr/24/coronavirus-detected-particles-air-pollution>
- <https://www.lung.org/lung-health-diseases/lung-disease-lookup/asthma/living-with-asthma/creating-asthma-friendly-environments/asthma-in-schools>
- <https://files.eric.ed.gov/fulltext/ED510053.pdf>
- [http://solaris.techlab360.org/sites/default/files/document\\_library/Effects-of-Inadequate-Building-Infrastructure-David-Branham-Dec-2004\\_0.pdf](http://solaris.techlab360.org/sites/default/files/document_library/Effects-of-Inadequate-Building-Infrastructure-David-Branham-Dec-2004_0.pdf)
- <https://worldpopulationreview.com/states/per-pupil-spending-by-state/>
- [https://www.nstasubs.org/?page\\_id=34](https://www.nstasubs.org/?page_id=34)
- <https://www.hsph.harvard.edu/news/press-releases/green-office-environments-linked-with-higher-cognitive-function-scores/>
- [http://blogs.edweek.org/edweek/state\\_edwatch/2019/04/students\\_learn\\_more\\_in\\_newer\\_schools\\_emerging\\_research\\_shows.html](http://blogs.edweek.org/edweek/state_edwatch/2019/04/students_learn_more_in_newer_schools_emerging_research_shows.html)
- [https://mishe.org/images/downloads/Conference\\_2016/single\\_point\\_bi\\_polar\\_ionization\\_by\\_global\\_plasma\\_solutions.pdf](https://mishe.org/images/downloads/Conference_2016/single_point_bi_polar_ionization_by_global_plasma_solutions.pdf)
- <https://iaqscience.lbl.gov/air-uv>
- <https://iaqscience.lbl.gov/air-uv>
- <https://www.epa.gov/iaq-schools/heating-ventilation-and-air-conditioning-systems-part-indoor-air-quality-design-tools#AirFiltration>